

INFINITY

naturally curved floor

Parquetry is a geometric mosaic of wood used for decorative effect. The notion of biophilia posits an inherent human inclination to affiliate with nature essential to people's physical and mental health, productivity and wellbeing.

Infinity is a surface covering system that follows the shapes of Nature enabling to improve appearance of floors, providing for a biophilic design and aesthetic atmosphere in the modern urban indoors.

At the same time this new system is more economical in respect of sustainable use of natural resources, since there will be generated less waste during the manufacturing process.



infinity by
 **ESTA
PARKET**



The system consists of a set of non-straight shaped panels, jointed with each other by means of tongue and groove. At the same time the adjacent systems may be interconnected same way to form a unique looking surface.

The panels are characterized by each having a different shape and correctly interconnected form a system. The formed system is shaped to allow intercoupling with other systems from all sides, to form an endlessly extendable surface covering.

The edges and ends of panels are profiled to allow intercoupling of the adjacent panels. The profiles prevent movement perpendicular to the horizontal plane and prevent lipping of adjacent panels surfaces.

The basic 4 row (A, B, C, D) system may be laid in a scattered pattern, where adjacent system is laid with a longitudinal step, in relation to the other system.

During the installation of modules, every next module should be installed with a shift. Thus, flooring looks unique and every board looks different.



TECHNICAL INFORMATION



3-layer Infinity construction with T&G connection

Top Layer:	3.0 / 6.0 mm (+/- 0.20 mm) Different Hardwood
Middle Layer:	9.1 / 14.5 mm - Spruce staves frame block with cross laminated multilayer Birch plywood jointing blocks
Bottom layer:	1,5mm (+/- 0,20 mm) - Birch veneer
Overall thickness:	13.6 / 22 mm (< 0.20 mm) back side
Board Length:	2.20 m (+/- 1.00 mm, max 1.00 mm per batch)
Board Width:	160 - 240 mm, mean 175 mm
Jointing profile:	Tongue and Groove
Bevel:	4 side

SURFACE TREATMENT OPTIONS



Matt Lac 15-20% gloss,
No Brush



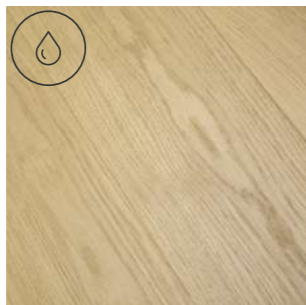
Matt Lac 15-20% gloss,
Brush



Stained Filler



Extra Matt Lac
5% gloss



UV-Oil



Dark Filler

WOOD SPECIES OPTIONS

OAK



ASH



WALNUT



GRADING OPTIONS

ABC



Moderate color variation is allowed. Occasional sapwood up to 30mm width, healthy and fallen out repaired knots diam. below 35mm, filled cracks < 50mm

BCD



Higher color variation allowed. Occasional sapwood up to 50mm width, unlimited healthy knots and fallen out repaired knots diam. below 60mm, filled cracks < 150mm

COLORS

infinity collection

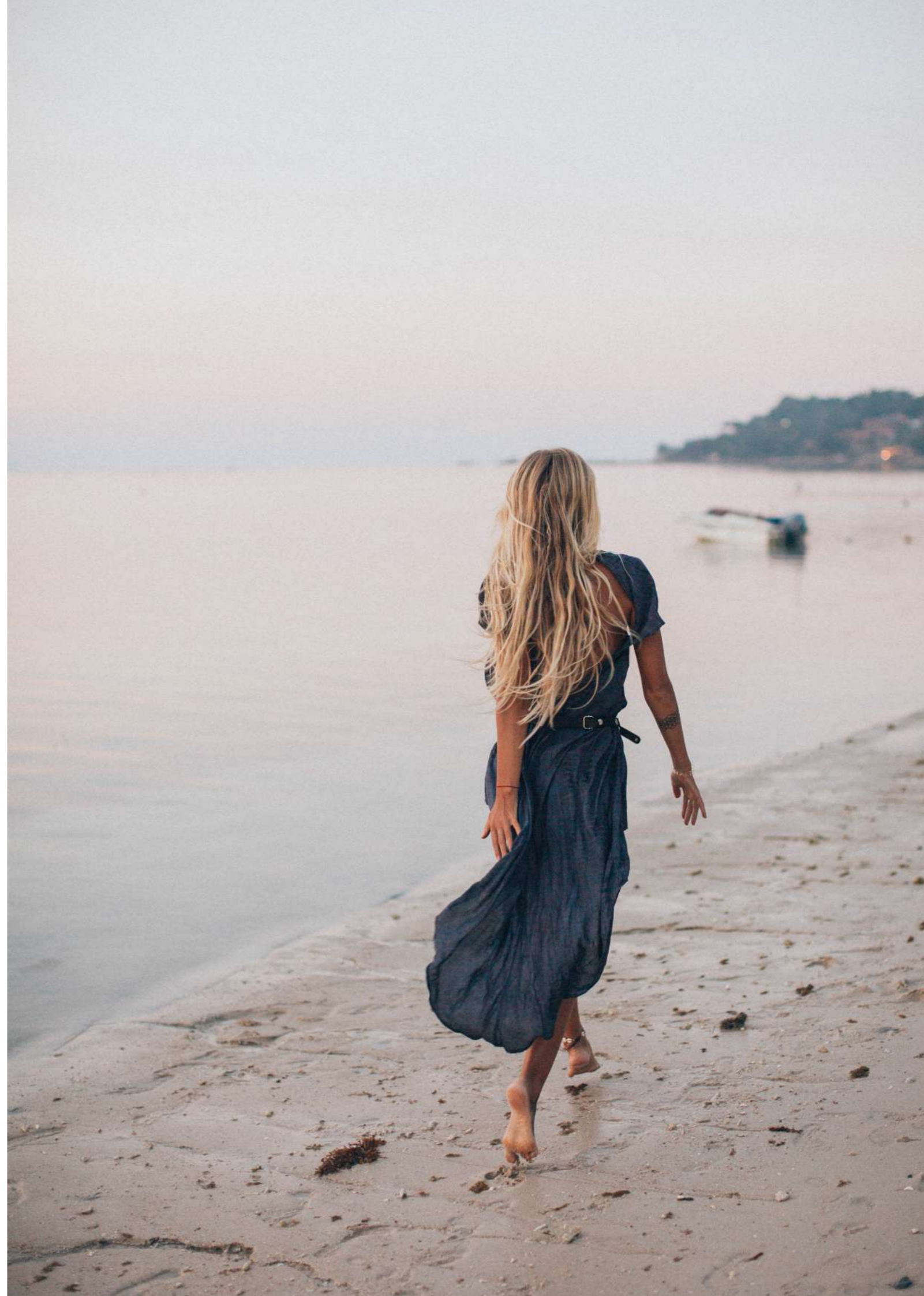




LONDON



PURE LINE





SANDSTONE



DUSKY GREY





STAVANGER



LAVA GREY



PACKING

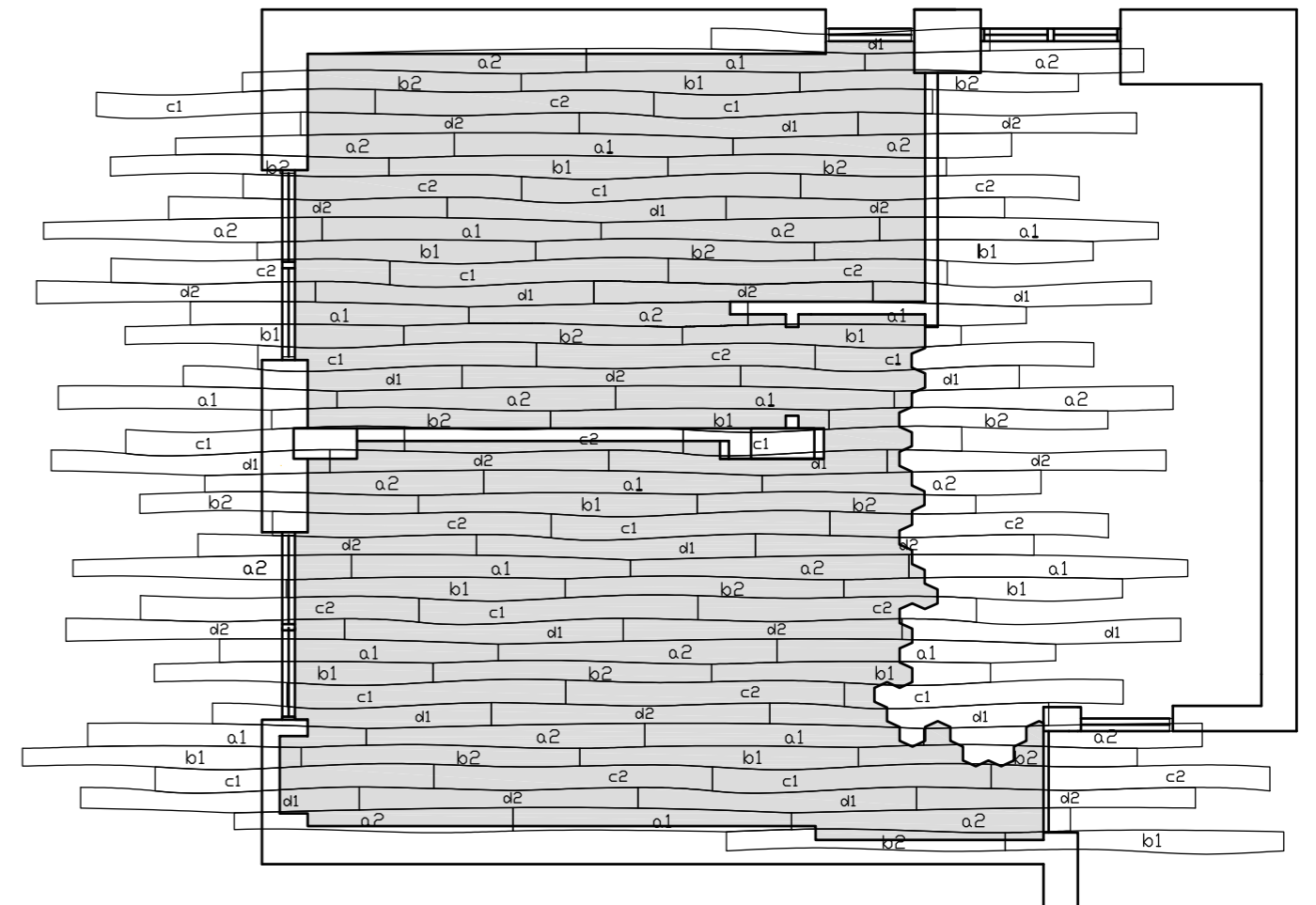
Infinity system is packed in bundles of panels, same shapes in one bundle. Each bundle 20 – 25 kg weight, neatly packaged; each bundle ~80 mm high carton edged, shrink wrapped. Packaged bundles are stacked 5 wide x 12 high on 100 mm skids, banded with plastic straps.



INQUIRY PROCESS

1. Please provide estimated project quantity with grading and surface treatment option
2. According to provided information offer will be prepared
3. After price is agreed and confirmed, please send .DWG file with the room layout where flooring should be installed with note of flooring direction
4. Calculating total project quantity including wastes
5. Signing a contract / production start
6. Estimated production time depending of situation is 6-8 weeks

FLOOR PLAN LAYOUT



Technomar & Adrem AS
Vana-Narva mnt 22, 74114
Maardu, Estonia

Tel. +372 603 4865
+372 603 4896

Fax +372 603 4844
+372 603 4845

www.estaparket.eu
info@estaparket.eu

